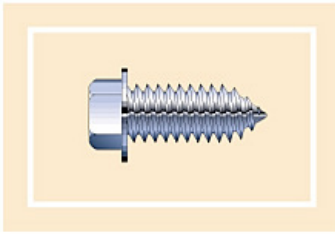




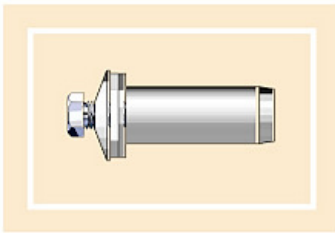
SPECIALTY FASTENERS

UNIQUE SPECIAL PURPOSE FASTENERS FOR THE CONSTRUCTION INDUSTRY



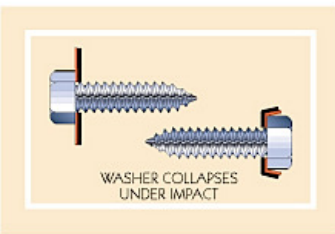
SCRUBOLT TYPE FASTENERS

- Scrubolts are used in metal buildings and for purlin struts.
- Manufactured from carbon steel.
- Assembled with 3/4" O.D. Galvanized Master Seal Bonded Washers.
- Hex Washer Head 3/8" Across Flats.
- Available in 11/32" (23/64") X 7/8", 1-1/4", 1-3/4", type AB.



MASTER PLUG - GROMMET SEAL FASTENER

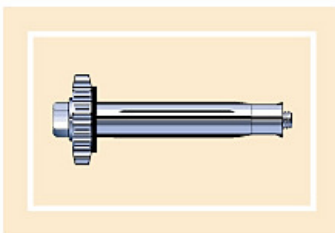
- Master Plug is a compression fastener used for fastening side lap & trim in fiberglass, translucent or vinyl panels.
- Slotted Hex Head Machine Screw - assembled with Black EPDM Grommet.
- Available 6/32 x 1" & 10/32 x 1". Other sizes available upon request.
- Compression shaft diameter - 1/4".



FABCO EXPLOSION VENTING FASTENER

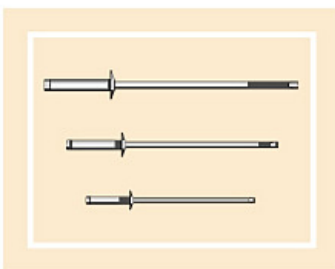
- Pressure-relieving fasteners may be used with any metal sheet or panel, with or without insulation for explosion venting purposes.
- Washer collapses under impact from shock wave of explosion.
- Factory Mutual Approved (FM report 1.OPOH2 AC).
- Available in 14-14 x 3/4", 1" & 1 1/2" AB.

Proper installation procedures must be followed to ensure correct operation of fastener.



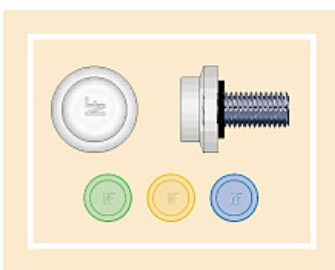
FAB-LOK FASTENERS * combine the benefits of rivets and screws

- Resists loosening due to severe vibration, racking, wind and expansion or contraction of dissimilar materials. Ideal for maintenance repair.
- **Aluminum Sleeve with Carbon steel Screw**
Three Grip Ranges .062-.250, .250-.500, .500-.750.
- **Aluminum Sleeve with Stainless Steel Screw**
Three Grip Ranges .062-.250, .250-.500, .500-.750.



BLIND RIVETS

- Used to attach trim, downspout straps to metal siding & door frame trim.
- Steel Rivets with Steel Mandrel in diameters 1/8", 3/16" & 1/4".
Grip Range -
From 1/8"- .63-.125 or .188-.250 - 3/16"- .126-.250 or .251-.375- 1/4"- .376-.500.
- Aluminum Rivet with Aluminum Mandrel in 1/8" diameter.
Grip Range - 1/8"- .032-.062 - .063-.125 - .126-.187 - .188-.250.



SNAP-ON PLASTIC COLOR CAPS FOR HEX HEAD FASTENERS

- Manufactured in polyethelene & available in most colors to match your panels.
- Double round configuration reduces or eliminates shadow lines.
- 5/16" inside hex fits #10 & #12 dia. screws.
- 3/8 inside hex fits #14 & #17 dia. screws.
- 1/2 inside hex fits 5/16 bolts & 9/16 inside hex fits 3/8 bolts.

TECHNICAL DATA FOR THESE PRODUCTS AVAILABLE ON REQUEST
Master Plug is a registered trademark of Aztec Washer Company, Inc. - Fab-lok & Fabco are registered trade marks of Camcar Textron.